

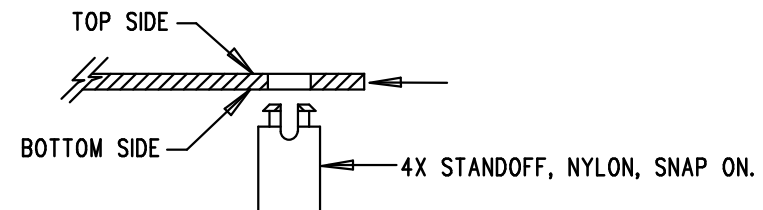
REVISION HISTORY				
ECO	REV	DESCRIPTION	APP. ENG.	DATE
-	2	PRODUCTION	MARK T.	03-04-10

NOTES: UNLESS OTHERWISE SPECIFIED

1. WORKMANSHIP SHALL BE IN ACCORDANCE WITH IPC-A-610.
2. ASSEMBLY PROCESS SHALL INCLUDE: REFLOW SOLDER TOP SIDE SMD.
3. PARTS TO OMIT WILL BE SPECIFIED ON THE BILLS OF MATERIAL. LOCATIONS OF OMITTED PARTS SHALL BE FREE OF SOLDER. MASK THE SOLDER STENCIL WHERE SMT PARTS ARE OMITTED.

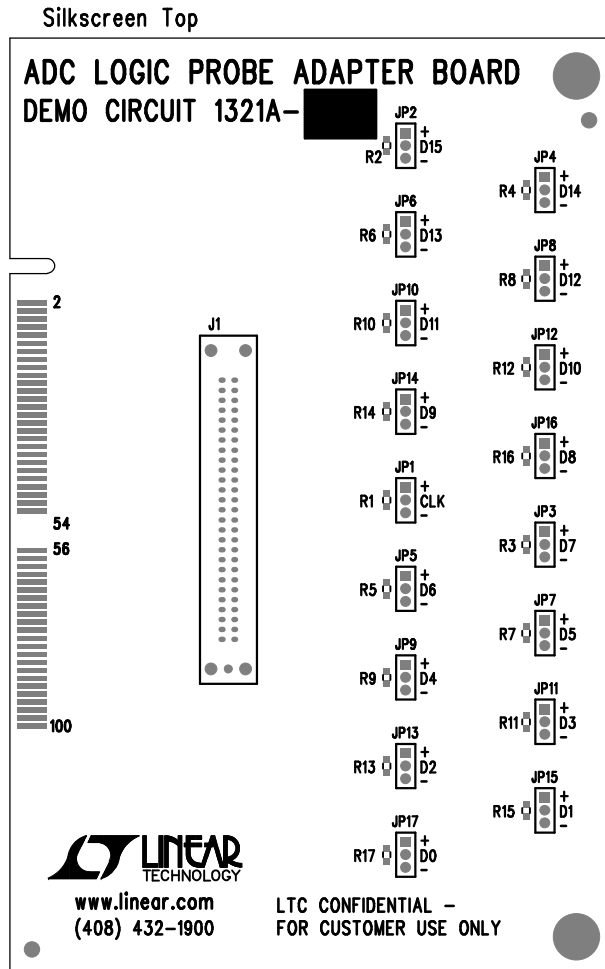
FILL UP ALL VIAS WITH SOLDER

4. DEPANELIZE BOARDS AFTER ASSEMBLY AND ROUTE-OUT THE BREAKOUT TABS ON FOUR SIDES OF THE BOARD EDGE.
5. DO NOT APPLY ANY KIND OF ASSEMBLY STAMP OR QA STAMP TO ANY BOARD.
6. INSTALL 4 STANDOFFS AT 4 LOCATIONS AS SHOWN BELOW:



7. MARK EACH LTC PART NUMBER AND ASSEMBLY TYPE WITH BLACK PERMANENT MARKER AS SHOWN IN TABLE BELOW:

ASSY	R1-R17
-A	OPT
-B	100



LINEAR TECHNOLOGY TOP SILKSCREEN
DC1321A
ADC LOGIC PROBE ADAPTER BOARD
DATE: 03-04-10

APPROVALS		LINEAR TECHNOLOGY 1630 MCCARTHY BLVD MILPITAS, CA 95035 PH: (408)432-1900 www.linear.com LTC CONFIDENTIAL - FOR CUSTOMER USE ONLY		
PCB DES.	AK			
APP ENG.	MARK T.			
		TITLE: TOP ASSEMBLY DRAWING		
		ADC LOGIC PROBE ADAPTER BOARD		
		SIZE N/A	IC NO. DEMO CIRCUIT 1321A	REV. 2
SCALE = NONE		FILENAME: DC1321A-1.PCB		SHT 1 OF 1